



KENNEDY'S

COUNTRY GARDENS



Corsican Mint *Mentha requienii*

Height: 1 inch

Spread: 12 inches

Sunlight:

Hardiness Zone: 6b

Description:

The smallest of Mints, this variety forms a flat carpet of tiny green leaves with intense fragrance; plant between flagstones as groundcover; will often self seed for years; a great base plant for containers

Ornamental Features

Corsican Mint features tiny spikes of lilac purple tubular flowers rising above the foliage from mid to late summer. Its attractive tiny fragrant round leaves remain green in color throughout the season.

Landscape Attributes

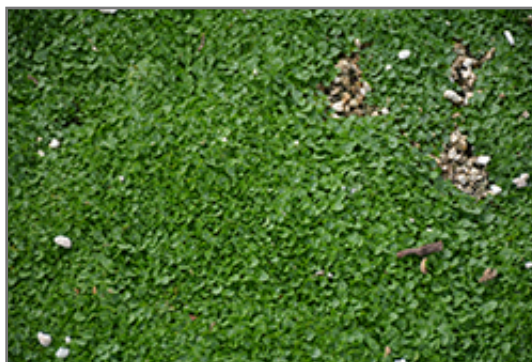
Corsican Mint is an herbaceous perennial with a ground-hugging habit of growth. It brings an extremely fine and delicate texture to the garden composition and should be used to full effect.

This is a relatively low maintenance plant, and should be cut back in late fall in preparation for winter. It is a good choice for attracting bees and butterflies to your yard, but is not particularly attractive to deer who tend to leave it alone in favor of tastier treats. Gardeners should be aware of the following characteristic(s) that may warrant special consideration;

- Invasive

Corsican Mint is recommended for the following landscape applications;

- Mass Planting
- Rock/Alpine Gardens
- Border Edging
- General Garden Use
- Container Planting



Corsican Mint foliage
Photo courtesy of NetPS Plant Finder

85 CHIEF JUSTICE CUSHING HWY
SCITUATE, MA 02066
781-545-1266

www.kennedycountrygardens.com



KENNEDY'S

COUNTRY GARDENS

Planting & Growing

Corsican Mint will grow to be only 1 inch tall at maturity, with a spread of 12 inches. Its foliage tends to remain low and dense right to the ground. It grows at a fast rate, and under ideal conditions can be expected to live for approximately 10 years. As an herbaceous perennial, this plant will usually die back to the crown each winter, and will regrow from the base each spring. Be careful not to disturb the crown in late winter when it may not be readily seen!

This plant does best in full sun to partial shade. It prefers to grow in average to moist conditions, and shouldn't be allowed to dry out. It is not particular as to soil type or pH. It is highly tolerant of urban pollution and will even thrive in inner city environments. This species is not originally from North America. It can be propagated by division.

Corsican Mint is a fine choice for the garden, but it is also a good selection for planting in outdoor pots and containers. Because of its spreading habit of growth, it is ideally suited for use as a 'spiller' in the 'spiller-thriller-filler' container combination; plant it near the edges where it can spill gracefully over the pot. Note that when growing plants in outdoor containers and baskets, they may require more frequent waterings than they would in the yard or garden.